

Low Maintenance

The permanent magnet does not require cryogenics, weekly servicing, or preventative maintenance. With standard 5mm NMR tubes, and automated shimming routines, the 100 can be plugged into standard wall power and used daily without requiring trained staff to maintain it.



Superior Performance

The Nanalysis 100 MHz offers 25% higher resolution than competing products. This affords better peak separation and superior sensitivity, while still maintaining an accessible, all-in-one, easy-to-use footprint.



Compact with Superior Ergonomics

The 100 MHz is the next evolution in benchtop NMR spectrometers. It can be located on any bench with access to a wall plug-in. The tilt and swivel display provides optimal touch screen access from any angle, whether sitting or standing. Easy access connection ports in both the front and rear of the spectrometer allow for easy data transfer access.



Easy Integration

The 100 MHz has been designed specifically to be incorporated into your existing laboratory. With numerous secure and accessible connectivity options, data can be easily exported and worked up in third party software programs.

- Implementation of optional software IQ/OQ
- Optional software packages allow for restricted user access
- Incorporation into LIMS
- Individual user logins
- Project creation and even simplistic design and implementation of applications

Inquire for more information about these software packages.

Technical Specifications

Operating Frequency:	100 MHz (2.35 T)
Magnet:	Permanent, no cryogenics
User Interface:	Integrated computer and/or remote accessibility
Nuclei:	Dual-tuned: e.g., <sup>1</sup> H/ <sup>13</sup> C, <sup>1</sup> H/ <sup>31</sup> P, <sup>1</sup> H/ <sup>19</sup> F, <sup>1</sup> H/ <sup>11</sup> B, <sup>19</sup> F/ <sup>7</sup> Li, please inquire about custom options
Lock:	Internal <sup>1</sup> H or <sup>2</sup> H
Sample:	Standard 5mm NMR tubes
Compatibility:	JCAMP-DX, Mnova, Delta, ACD/Labs, Topspin, Labview, Matlab
Resolution & Lineshape:	<1.0 Hz
Sensitivity:	220 : 1 (1% EtBz)
Operating Temperature:	16 to 28°C
Power Supply:	100-240 VAC, 50-60 Hz
Dimensions:	14.6 x 16.3 x 25.8" (plus screen) (37.1 x 41.4 x 65.4 cm)
Weight:	185 lbs (84 kg)

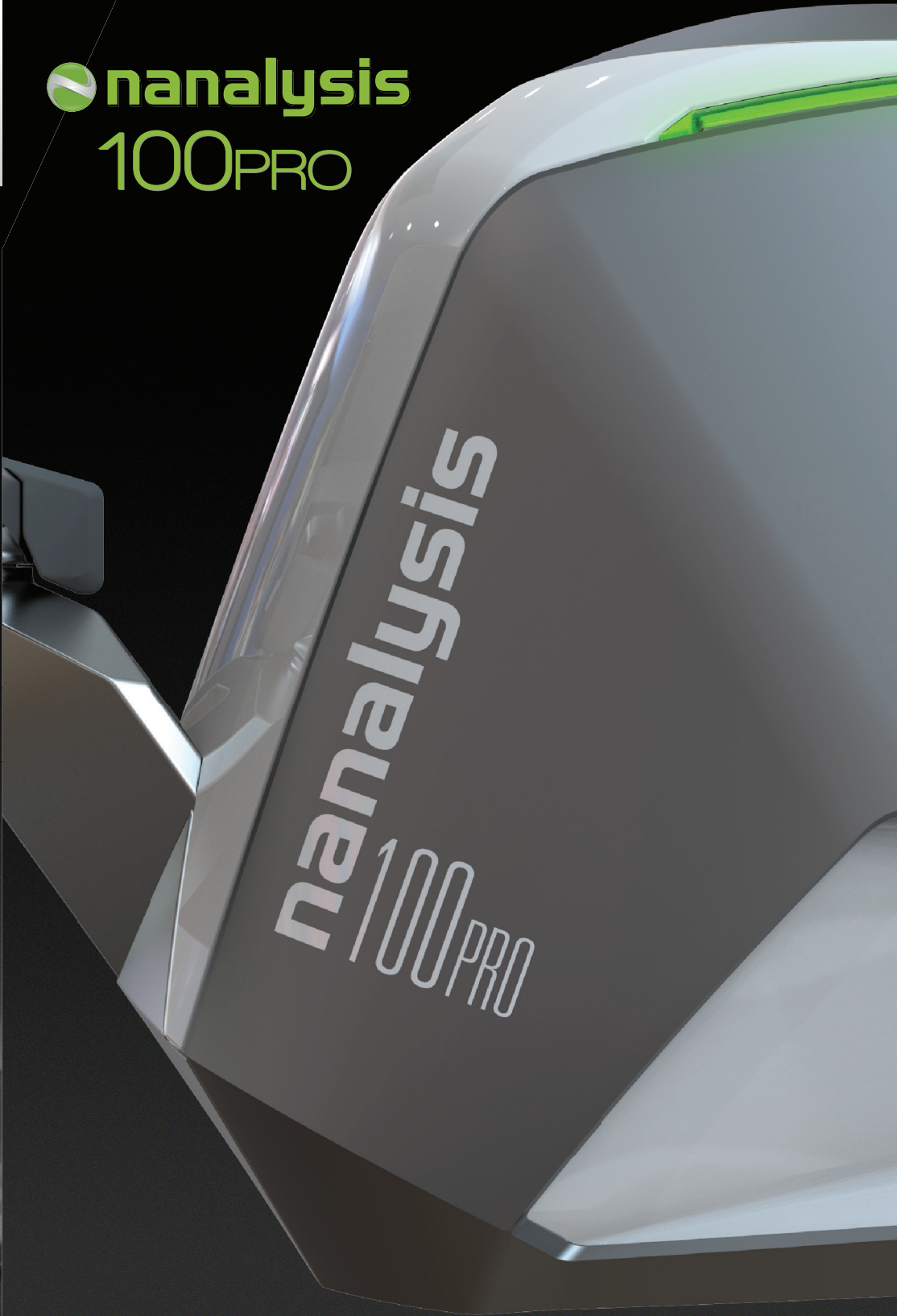


Nanalysis Corp.  
Bay 1, 4600 5 Street NE  
Calgary, Alberta, Canada T2E 7C3

+1.403.769.9499  
Sales: sales@nanalysis.com  
www.nanalysis.com



nanalysis  
100PRO





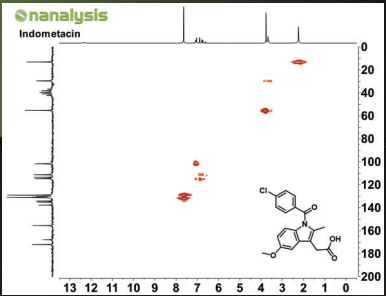
Multinuclear Capability

Inquire about available nuclide configurations to enhance the utility of 100 for characterization of a broad range of natural and synthetic complexes. You can observe a number of spin active nuclei including: <sup>1</sup>H, <sup>7</sup>Li, <sup>11</sup>B, <sup>13</sup>C, <sup>15</sup>N, <sup>19</sup>F, <sup>29</sup>Si, <sup>31</sup>P, <sup>129</sup>Xe.

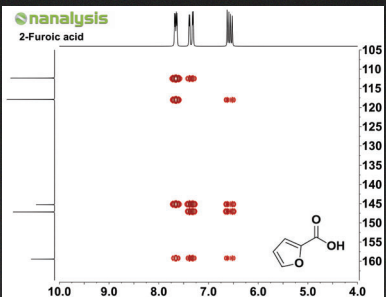
Versatile User Interface

The instrument can be controlled via the touchscreen, with a keyboard and mouse, or through an external computer to:

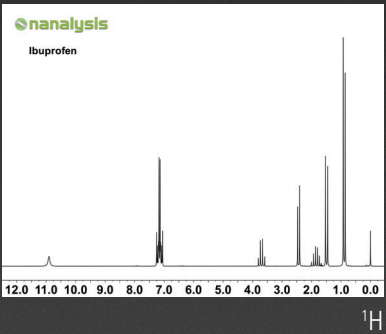
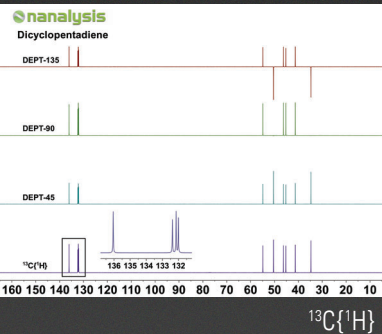
- **Load Standard Experiments**  
The standard experiments are (1D, COSY, JRES, T<sub>1</sub>, T<sub>2</sub>, HETCOR, HSQC, HMBC, etc.)
- **Design Pulse Experiments**  
Our advanced software allows users to easily create and modify pulse programs, including pulse power, timing, phase cycling, etc..
- **Queue Experiments**  
Through automated analysis, set up a series of experiments to be acquired automatically (e.g. 1D <sup>1</sup>H, COSY, HSQC, 1D <sup>13</sup>C{<sup>1</sup>H})



HSQC



HMBC



Quick and Easy-to-use

Like the rest of the NMReady family, the integrated touchscreen permits users to load standard experiments directly or modify key acquisition parameters. Data can be worked up on board with the included processing software, easily exported for use with third party programs, or printed. With superior sensitivity, samples can be collected in seconds.

1 Configure

Experiments are selected from simple dropdown menus and loaded with standard acquisition parameters. These can be modified as desired from a series of convenient pop-up menus.

2 Acquire

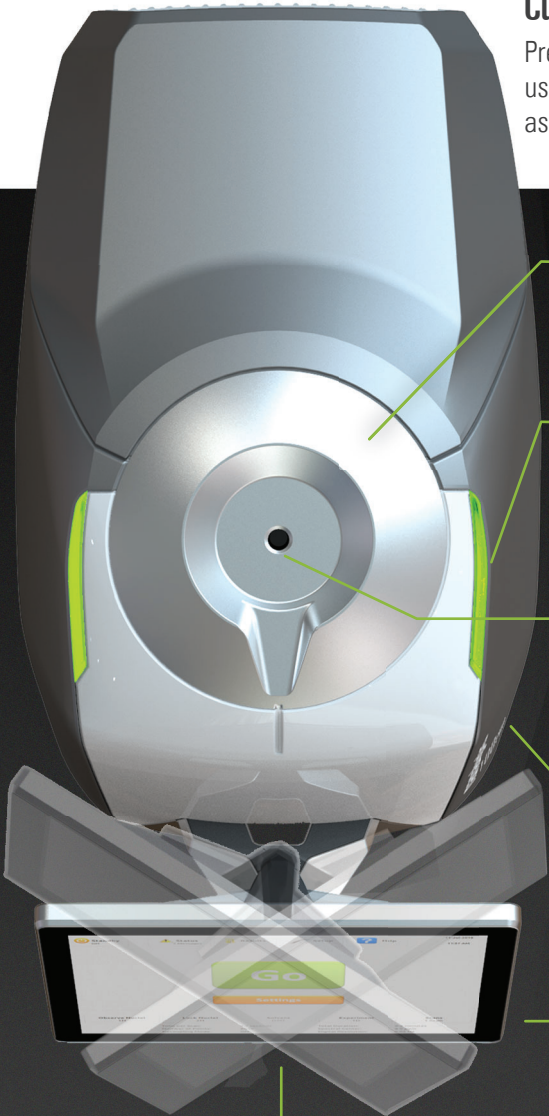
Once configured, data is collected by merely selecting 'Go'. Each scan is collected in seconds, depending on acquisition parameters. The first scan is displayed and updated every additional four scans.

3 Analyze

State of the art on-board data processing makes it easy to process and analyze 1D, 2D spectra on the instrument. Additionally, spectra are saved as standard JCAMP-DX files and are compatible with many third-party software tools.

Customizable Experience

Pre-loaded with many standard, fully-adjustable experiments, users can immediately acquire results, and customize parameters. Monitor and assess reaction completeness, purity and relative composition right in the lab.



**Innovative magnet design**  
<2G outside

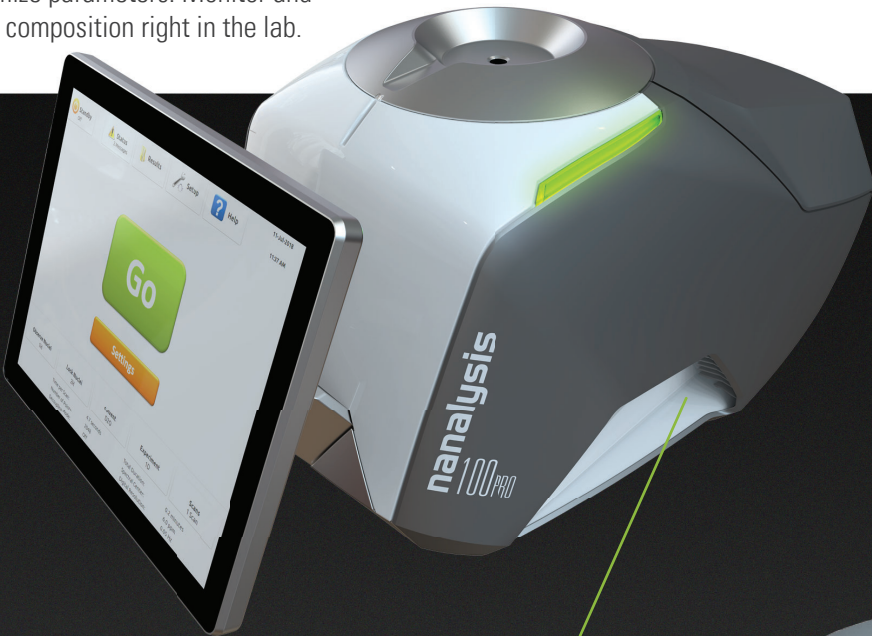
**Progress Indicator**  
Large status light so you know when a scan is finished from across the room

**Sample Access Port**  
5mm NMR tubes

**Enhanced stability**  
Vibration absorbing feet and precision machined structures for optimal stability

**Ergonomic Display**  
State of the art multiposition possibilities

**Quick Access**  
Front USB ports and power button



**Optimal Thermal Control**  
External heat sink and side vents for built in convection and conduction heat management



**Connectivity**  
Ethernet / WiFi, USB, Serial, HDMI

